



CREST
ULTRASONICS

**HAL 11, 15 OR 20
WRD (DRW)**

CREST HOSPITAL HALWRD CONSOLE SERIES • Wash-Rinse-Dry

APPLICATION:

Crest HALWRD Series Ultrasonic Cleaning Systems are designed to thoroughly wash, rinse and dry instruments prior to final disinfection and sterilization in order to ensure total removal of tissue, blood and other contaminants. Thoroughly cleaning instruments and lubricating them between uses helps to keep them functioning properly and assure surgeon efficiency. The HAL Series cleaners can be used in high volume areas either in the O.R. or Central Supply to process instruments prior to final disinfection and sterilization as required.

FEATURES:

Optimum Ultrasonic Cleaning Power is assured by constant power output generators operating at 40 kHz. Vibra-bar transducer modules are bonded to the wash tank and provide maximum transmission of energy to clean the instruments.

Automatic Lid and Tray Elevator improves safety and increases the ease of loading instruments.

E-Z Load Tray Elevator is positioned at a convenient working height and oriented laterally to ease the loading of heavy trays of instruments.

Illuminated Main Controls include power On/Off, automatic fill, drain alert with cycle counter, adjustable wash and rinse cycle timers, drain actuator, lid actuator, lube and emergency stop.

Large Capacity Process Tanks (11, 15 or 20 gallon) will accept a large variety of instrument trays. One instrument tray included with each unit.

Large Load Capacity optimizes throughput with 22 pounds of instruments in 11 or 15 gallon models and 35 pounds in the 20 gallon model.

Automatic Push Button Ultrasonic Drain with drain indicator light and built-in counter to provide tracking for number of wash cycles, alerts operator when ultrasonic tank should be drained.

Toe Touch Control lowers the instruments into the cleaning solution, closes the lid and starts processing. When processed the lid is automatically raised along with the instruments to the unload position where they can be transferred to the Rinse/Dry Processing Tank.

Rinse/Dry Process Tank utilizes the same automatic control system to assure properly cleaned instruments every time.

Safety Interlocks and Controls are provided to assure complete operator safety.



Front and Side Service Access Doors are scratch and dent resistant as well as sound dampening and provide for ease of maintenance.

OPTIONS:

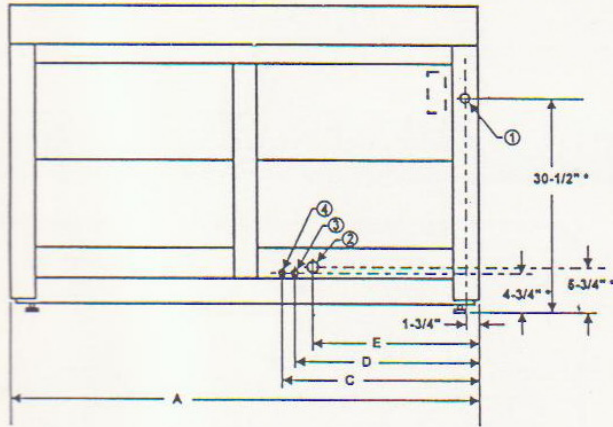
Right to Left Work Flow Console rather than Standard Left to Right Work Flow. (Specify-HAL11, 15 or 20 DRW)

Timed distilled water and instrument milk lubricating spray provides proper lubrication of instruments thereby assuring proper function and extending instrument life. (Specify-DM)

Electrical Voltage supplied for 240 volt operation rather than 208 volt standard voltage. (Specify voltage required)

ARCHITECTURAL SPECIFICATIONS:

Ultrasonic cleaning system shall be a freestanding console type constructed of stainless steel. Unit is to incorporate a wash tank and a rinse/dry tank with automatic lids and load elevators. The unit is to include ultrasonic generators with slide out chassis for ease in service. The generators are to provide constant output power to assure constant and consistent energy levels in the wash process. Energy output is to be in the 40 kHz range and complemented with complex resonance frequencies to assure zero gap cleaning efficiency. Wash, Rinse/Dry unit to be Crest Model HAL11WRD (11 gal. tank), HAL15WRD (15 gal. tank) or HAL20WRD (20 gal. tank).



REAR VIEW

NOTES

1. 208V/60HZ/3-1PH
2. Drain: 1-1/4" CPVC Male Slip
3. Optional Distilled Water Fill (100/120°F): CPVC Male Slip
4. Hot Water Fill (100/120°F): 1/2" CPVC Male Slip

Electrical connections can be performed from front of unit. All plumbing and electrical connections to be in accordance with local codes. 3 Ph requires 5 wires including Neutral and Ground, 1 Ph requires 4 wires.

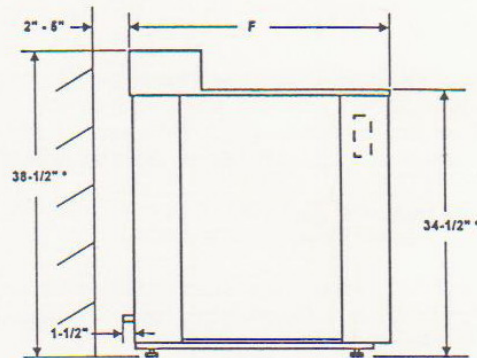
IMPORTANT

Equipment distance from rear wall is dependent on location of utilities connections.

MAXIMUM TRAY SIZE

- HAL11 20-1/2" x 10-1/2" x 3-1/2"
- HAL15 20-1/2" x 13" x 3-1/2"
- HAL20 24" x 15" x 3-1/2"

MODEL	DIMENSION (INCHES)					
	A	B	C	D	E	F
HAL11WRD	60	32	25-1/4	23-1/2	21-1/4	31
HAL15WRD	60	32	25-1/4	23-1/2	21-1/4	33
HAL20WRD	70	39	25-1/4	23-1/2	21-1/4	35
HAL11DRW	60	28	34-3/4	36-1/2	38-3/4	31
HAL15DRW	60	28	34-3/4	36-1/2	38-3/4	33
HAL20DRW	70	31	42-1/2	44-1/4	46-1/2	35



SIDE VIEW

*Add 2 inches for casters if applicable

TECHNICAL DATA

MODEL	POWER REQUIREMENTS - Amp				SONIC POWER WATTS	SHIP WEIGHT POUNDS	FLUID CAP. GAL.	HEAT DISS. BTU	TRAY SIZE* LxWxD
	208V		240V						
	1PH	3PH	1PH	3PH					
HAL11WRD	40	29	36	36	750	825	11	1600	20x10-1/2x3-1/2
HAL15WRD	40	32	37	37	1,000	900	15	1725	20x13x3-1/2
HAL20WRD	55	43	45	45	1,500	950	20	2100	24x13x3-1/2
HAL11DRW	40	29	36	36	750	825	11	1600	20x10-1/2x3-1/2
HAL15DRW	40	32	37	37	1,000	900	15	1725	20x13x3-1/2
HAL20DRW	55	43	45	45	1,500	950	20	2100	24x13x3-1/2



CREST
ULTRASONICS

Scotch Road, Mercer County Airport
P.O. Box 7266, Trenton, NJ USA
609-883-4000
Fax: 609-530-0923