



CREST
ULTRASONICS

HAL 11, 15 OR 20
WR (RW)

CREST HOSPITAL HALWR CONSOLE SERIES • Wash-Rinse

APPLICATION:

Crest HALWR Series Ultrasonic Cleaning Systems are designed to thoroughly wash and rinse instruments prior to final disinfection and sterilization in order to ensure total removal of tissue, blood and other contaminants. Thoroughly cleaning instruments and lubricating them between uses helps to keep them functioning properly and assure surgeon efficiency. The HAL Series cleaners can be used in high volume areas either in the O.R. or Central Supply to process instruments prior to final disinfection and sterilization as required.

FEATURES:

Optimum Ultrasonic Cleaning Power is assured by constant power output generators operating at 40 kHz. Vibra-bar transducer modules are bonded to the wash tank and provide maximum transmission of energy to clean the instruments.

Automatic Lid and Tray Elevator improves safety and increases the ease of loading instruments.

E-Z Load Tray Elevator is positioned at a convenient working height and oriented laterally to ease the loading of heavy trays of instruments.

Illuminated Main Controls include power On/Off, automatic fill, drain alert with cycle counter, adjustable wash and rinse cycle timers, drain actuator, lid actuator, lube and emergency stop.

Large Capacity Process Tanks (11, 15 or 20 gallon) will accept a large variety of instrument trays. One instrument tray included with each unit.

Large Load Capacity optimizes throughput with 22 pounds of instruments in 11 or 15 gallon models and 35 pounds in the 20 gallon model.

Automatic Push Button Ultrasonic Drain with drain indicator light and built-in counter to provide tracking for number of wash cycles, alerts operator when ultrasonic tank should be drained.

Toe Touch Control lowers the instruments into the cleaning solution, closes the lid and starts processing. When processed the lid is automatically raised along with the instruments to the unload position where they can be transferred to the Rinse Processing Tank.

Rinse Process Tank utilizes the same automatic control system to assure properly cleaned instruments every time.

Safety Interlocks and Controls are provided to assure complete operator safety.



Front and Side Service Access Doors are scratch and dent resistant as well as sound dampening and provide for ease of maintenance.

OPTIONS:

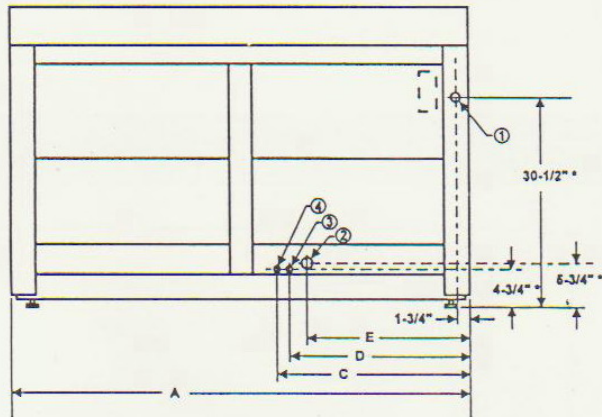
Right to Left Work Flow Console rather than Standard Left to Right Work Flow. (Specify-HAL11, 15 or 20 RW)

Timed distilled water and instrument milk lubricating spray provides proper lubrication of instruments thereby assuring proper function and extending instrument life. (Specify-DM)

Electrical Voltage supplied for 240 volt operation rather than 208 volt standard voltage. (Specify voltage required)

ARCHITECTURAL SPECIFICATIONS:

Ultrasonic cleaning system shall be a freestanding console type constructed of stainless steel. Unit is to incorporate a wash tank and a rinse tank with automatic lids and load elevators. The unit is to include ultrasonic generators with slide out chassis for ease in service. The generators are to provide constant output power to assure constant and consistent energy levels in the wash process. Energy output is to be in the 40 kHz range and complemented with complex resonance frequencies to assure zero gap cleaning efficiency. Wash, Rinse unit to be Crest Model HAL11WR (11 gal. tank), HAL15WR (15 gal. tank) or HAL20WR (20 gal. tank).



NOTES

1. 208V/60HZ/3-1PH
2. Drain: 1-1/4" CPVC Male Slip
3. Optional Distilled Water Fill (100/120°F): CPVC Male Slip
4. Hot Water Fill (100/120°F): 1/2" CPVC Male Slip

Electrical connections can be performed from front of unit. All plumbing and electrical connections to be in accordance with local codes. 3 Ph requires 5 wires including Neutral and Ground, 1 Ph requires 4 wires.

IMPORTANT

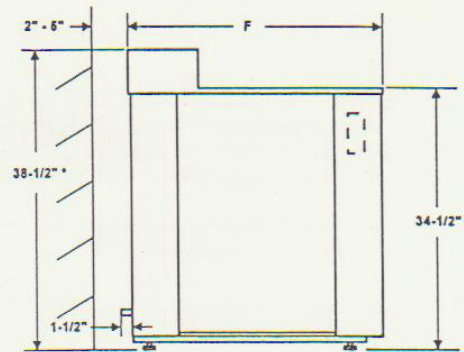
Equipment distance from rear wall is dependent on location of utilities connections.

MAXIMUM TRAY SIZE

- HAL11 20-1/2" x 10-1/2" x 3-1/2"
- HAL15 20-1/2" x 13" x 3-1/2"
- HAL20 24" x 15" x 3-1/2"

REAR VIEW

MODEL	DIMENSION (INCHES)					
	A	B	C	D	E	F
HAL11WR	60	-	25-1/4	23-1/2	21-1/4	31
HAL15WR	60	-	25-1/4	23-1/2	21-1/4	33
HAL20WR	70	-	25-1/4	23-1/2	21-1/4	35
HAL11RW	60	-	34-3/4	36-1/2	38-3/4	31
HAL15RW	60	-	34-3/4	36-1/2	38-3/4	33
HAL20RW	70	-	42-1/2	44-1/4	46-1/2	35



SIDE VIEW

*Add 2 inches for casters if applicable

TECHNICAL DATA

MODEL	POWER REQUIREMENTS - Amp				SONIC POWER WATTS	SHIP WEIGHT POUNDS	FLUID CAP. GAL.	HEAT DISS. BTU	TRAY SIZE* LxWxD
	208V		240V						
	1PH	3PH	1PH	3PH					
HAL11WR	17	15	14	14	750	800	11	280	20x10-1/2x3-1/2
HAL15WR	17	15	16	16	1,000	800	15	300	20x13x3-1/2
HAL20WR	30	26	22	22	1,500	850	20	375	24x13x3-1/2
HAL11RW	17	15	14	14	750	800	11	280	20x10-1/2x3-1/2
HAL15RW	17	15	16	16	1,000	800	15	300	20x13x3-1/2
HAL20RW	30	26	22	22	1,500	850	20	375	24x13x3-1/2



Scotch Road, Mercer County Airport
 P.O. Box 7266, Trenton, NJ USA
 609-883-4000
 Fax: 609-530-0923